



Gateway Regional Water Conservation Alliance Report

Los Angeles Gateway Region Integrated Regional Water Management Authority

June 2011



**Gateway Regional Water
Conservation Alliance
Report**

**Los Angeles Gateway Region
Integrated Regional Water
Management Authority**

June 2011

1 Introduction

The Senate Bill X7-7 (SBX7-7), the Water Conservation Act of 2009 (Act) was signed into law November 2009. This legislation set a goal of achieving a 20 percent statewide reduction in urban per capita water use, and requires urban retail water suppliers to set 2020 Urban Water Use Targets to meet that goal. Commonly referred to as the 20 by 2020 plan The Act identifies the methodologies, water use targets and reporting requirements that apply to urban water suppliers. It directed the California Department of Water Resources (DWR) to develop technical methodologies and criteria to ensure the consistent implementation of the Act, and to provide guidance to urban retail water suppliers in developing baseline water use and compliance water use targets.

The Act requires that urban retail water suppliers who have either 3000 or more connections or provide 3000 acre-feet or more of water per year to their customers, develop Per Capita Urban Water Use Targets for 2020 in order to qualify for state grants and loans. Each urban retail water supplier must include the following information in their Urban Water Management Plans (UWMPs), beginning in their submittal for 2010:

- Baseline Daily Per Capita Water Use (Baseline)
- 2020 Urban Water Use Target (2020 Target)
- 2015 Interim Urban Water Use Target (2015 Interim Target)

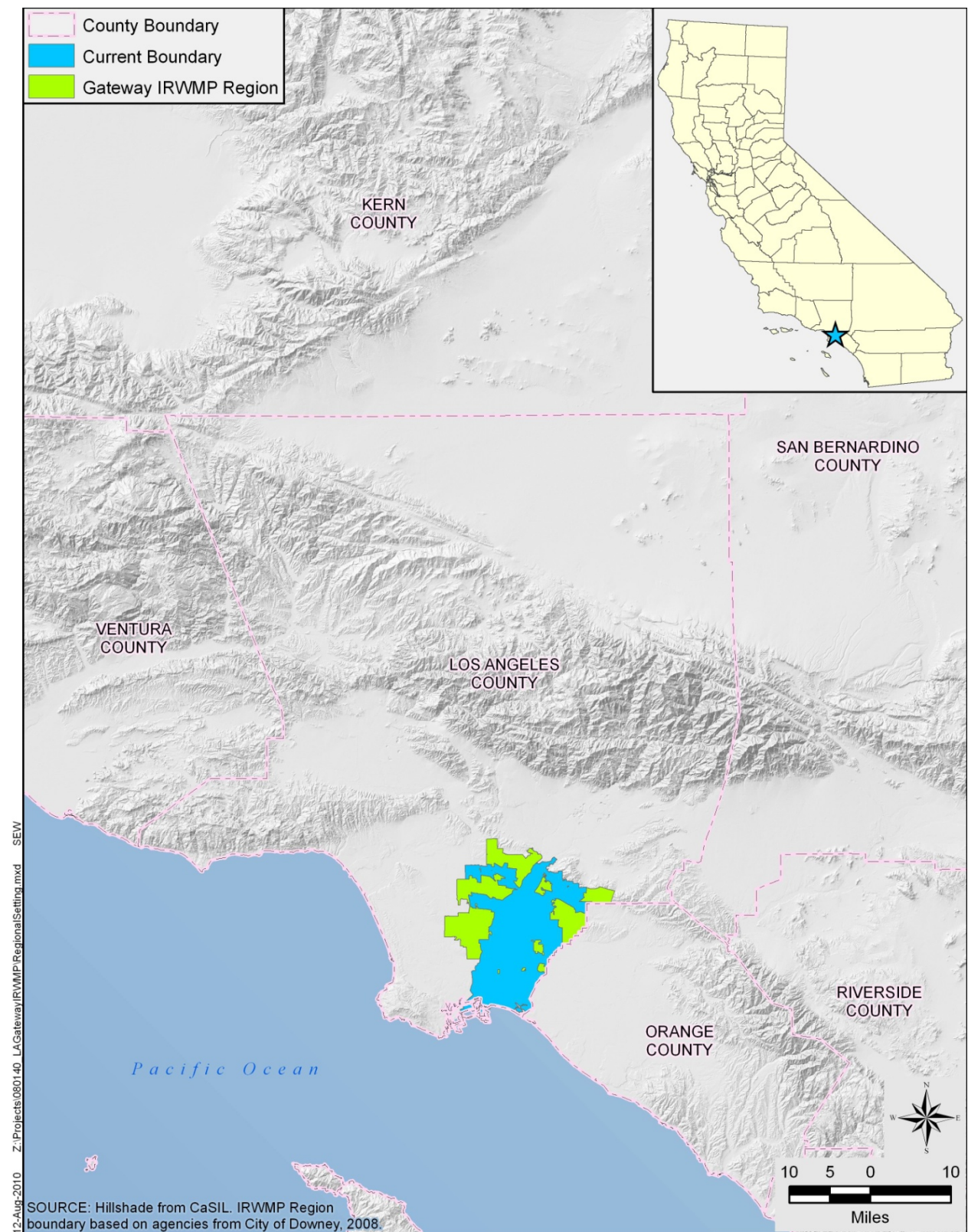
According to Sections 10608.20(a)(1) and 10608.28 of the California Water Code, urban retail water suppliers may plan, comply, and report the above information on a regional basis, an individual basis, or both.

The Gateway Cities formed the Los Angeles Gateway Integrated Water Management Authority (Gateway Authority) to develop a detailed integrated regional water management plan specifically for the Gateway area and to assist the area in other water related projects. The Gateway Authority is an official joint powers authority (JPA) under California law. There are currently 19 entities signatory to the JPA. They are actively engaging in both stakeholder and public outreach programs to expand JPA membership. The Gateway Region is located in southeast Los Angeles County, see Figure 1.

As most urban water retailers in the Gateway Region are signatories to the Gateway Authority, it is a logical extension of regional planning efforts for the Authority to comply with the reporting requirements of SBX7-7 on a regional basis.

If complying on a regional basis, a letter must be submitted to DWR stating that a Regional Alliance has been formed. The alliance members must sign an agreement committing to their participation and to meeting the 2015 interim and 2020 Urban Water Use Targets. Each board must also submit a resolution binding their agency to that agreement. Regional 2020 Targets and 2015 Interim Targets must also be included in each Regional Alliance member's Urban Water Management Plan.

Figure 1. Gateway Authority Location



If a Regional Alliance meets its regional target, then all suppliers in the alliance will be deemed compliant. If a Regional Alliance fails to meet its regional target, water suppliers in the Alliance that meet their individual targets will be deemed compliant. Water suppliers in alliances that meet neither their individual target nor their regional target will be deemed non-compliant. In general, urban water suppliers that use less than 100 gallons per capita per day are exempt from setting compliance targets. An agency that has a low per capita water use helps lower the target for the region, but can still use its individually calculated target.

The participating agencies within the Gateway Region formed a regional alliance. Copies of the draft Letter Agreement and draft resolution can be found in Appendix C.

One goal of the Gateway Regional Alliance is to provide flexibility for the cities and water agencies within the Gateway Region to comply with the requirements of SBX7-7. By enabling the cities and water agencies in the area to plan, comply, and report either regionally or independently, the Gateway Regional Alliance improves the likelihood that those cities and water agencies will qualify for grant funds. A second, long-term goal is for the participating agencies to take a regional approach to water conservation and encourage further cooperation between the participating agencies.

2 Outreach and Participation

2.1 Regional Alliance

A total of 24 urban water suppliers (cities, water companies, and water districts) in the Gateway IRWMP area were invited to form the Gateway Regional Alliance. Figure 2 below shows all of the communities located within the Gateway IRWMP area. A contact list was developed and the urban water suppliers in the Gateway IRWMP area were engaged during the early stages of the Gateway Regional Alliance process. A letter, Appendix A, was sent to each of the water supplier representatives, which included an explanation of the goals and objectives of forming the Gateway Regional Alliance and the benefits of planning, reporting, and complying with the Water Conservation Act of 2009. In addition to the letter, an email with requests for specific water use data was sent out to each urban water supplier. The email explained the type of data required for the 20x2020 Compliance calculations, and identified where that data might be found. Follow-up telephone calls were made to encourage participation in the Gateway Regional Alliance as well as provide information about the alliance process in general and to clarify any questions regarding the data requests.

Once agency-specific data was received and processed, the information was sent back to the individual representatives for their review and comment. Comments, if any, were addressed, and the individual data was entered into the database for regional calculations.

Of the 24 urban water suppliers that were contacted, 17 agencies have agreed to participate and will form the Gateway Regional Alliance.

Participating Agencies	
Bellflower-Somerset Mutual Water Company	City of Bell Gardens
City of Cerritos	City of Downey
City of Huntington Park	City of Lakewood
City of Long Beach	City of Lynwood
City of Norwalk	City of Paramount
City of Pico Rivera	Pico Water District
City of Santa Fe Springs	City of Signal Hill
City of South Gate	City of Vernon
City of Whittier	

The remaining urban water suppliers, listed below, chose not to participate because they are not required to submit an UWMP or stated that they would comply with the SBX7-7 requirements individually.

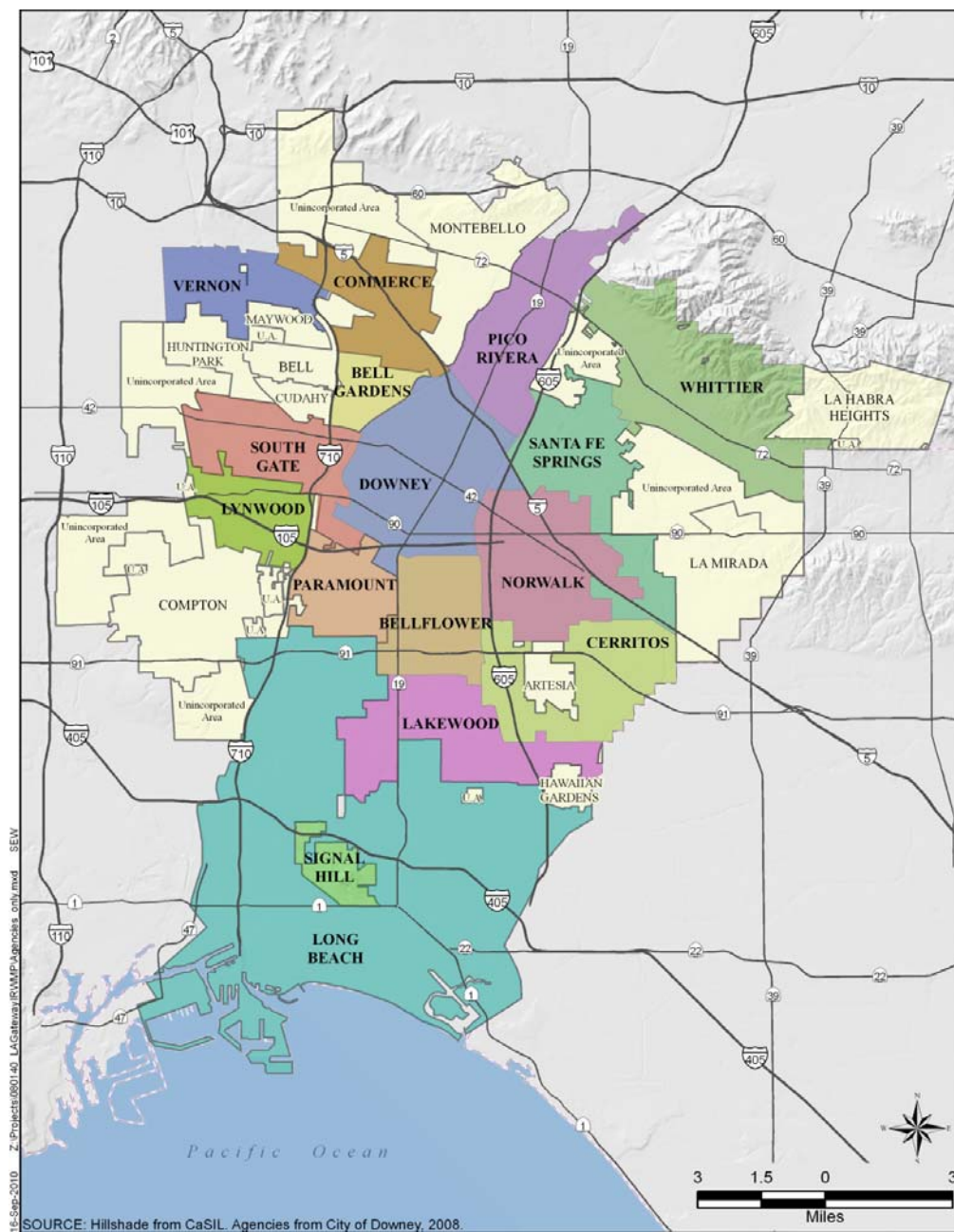
California Water Service Company	Doing own calculations
City of Commerce	UWMP not required
Golden State Water Company	Doing own calculations
La Habra Heights County Water District	UWMP not required
Montebello Land & Water	Doing own calculations
Park Water Company	Doing own calculations
San Gabriel Valley Water Company	Doing own calculations
Suburban Water Systems	Doing own calculations

2.2 Public Hearing

A public hearing was conducted as required by the guidelines to gather any public comments on the formation of a regional alliance for reporting water use targets and on the draft results of the 20x2020 calculations (presented later in this document). The hearing was held on May 13 in conjunction with a regular meeting of the Gateway Authority. The hearing was noticed on May 4 and May 10, 2011 in the Los Angeles Times and the Long Beach Press Telegram, as well as being noticed in the Gateway Authority May 13, 2011 Agenda.

On behalf of the Authority, Gateway Authority's consultant presented the background and results of the 2015 and 2020 water use targets for the region and for each individual participating agency. There were no comments submitted at the public hearing.

Figure 2. Gateway IRWMP Area Map



3 Calculations

The following is an explanation of the elements used to calculate the urban per capita water use for both the 10-Year and the 5-Year Baseline periods:

- **Population Estimate:** The population estimates were obtained from each agency's DWR Public Water System Statistics Reports. Each agency's service area population estimates were developed based on US Census data and California Department of Finance data.
- **Groundwater Extraction:** Groundwater extraction values from each agency were obtained from analysis of DWR Public Water System Statistics Reports. Groundwater used to develop water production wells and groundwater sold to other water utilities was deducted from the overall groundwater extraction volume. This identified the amount of groundwater entering a given agency's distribution system.
- **Purchased Water:** The Alliance participants made numerous water purchases during the selected 10-Year and 5-Year Baseline periods. Additional water was purchased intra-regionally – between suppliers – as well as from the Central Basin Municipal Water District. Purchased water was excluded from the selling agency's calculated water use, but included in the purchasing agency's water use; thus the same water was not counted twice.
- **Distribution System Storage Change:** The net change in the distribution system storage was not included in the gross water calculation.
- **Agricultural Water Use and Process Water:** Agricultural and process water uses were not included in the gross water use calculation.
- **Gross Water Use Before Indirect Recycled Water Use:** Groundwater extractions and purchased potable water were combined to obtain the gross water use.
- **Indirect Water Use Deduction:** The Water Replenishment District of Southern California (WRD) uses recycled water as a supplement to imported water, local water, and natural recharge for replenishment of the groundwater basin. Table A-1 below (Water Replenishment District of Southern California, Engineering Survey and Report, 2011, p. A-6) displays the historical amount of water replenished in the Montebello Forebay Spreading Grounds. The five-year average of recycled water present in the recharged water was estimated for each year in the baseline period. This yearly percentage of recycled water, a 10 percent "in-basin loss," and a 3 percent "distribution system loss," were excluded from the groundwater extraction for each year in the baseline period.
- **Adjusted Gross Water Use Before Indirect Recycled Water Use:** Groundwater extractions adjusted for indirect recycled water use and purchased potable water were combined to obtain the adjusted urban water use.

Table A-1

(In Acre-feet)

YEAR	GROUNDWATER PRODUCTION	IMPORTED WATER FOR DIRECT USE*	RECLAIMED WATER FOR DIRECT USE*	TOTAL
WATER YEAR				
1960-61	354,400	196,800		551,200
1961-62	334,900	178,784		513,684
1962-63	284,500	222,131		506,631
1963-64	280,400	257,725		538,125
1964-65	271,400	313,766		585,166
1965-66	283,600	308,043		591,643
1966-67	269,000	352,787		621,787
1967-68	281,700	374,526		656,226
1968-69	275,400	365,528		640,928
1969-70	284,800	398,149		682,949
1970-71	272,500	397,122		669,622
1971-72	280,900	428,713		709,613
1972-73	265,900	400,785		666,685
1973-74	266,300	410,546		676,846
1974-75	269,800	380,228		650,028
1975-76	274,700	404,958		679,658
1976-77	271,300	355,896		627,196
1977-78	254,900	373,116		628,016
1978-79	265,000	380,101	100 ^(a)	645,201
1979-80	266,600	397,213	200	664,013
1980-81	269,626	294,730	300	564,656
1981-82	264,461	391,734	300	656,495
1982-83	252,090	408,543	400	661,033
1983-84	248,590	441,151	1,800	691,541
1984-85	245,831	451,549	2,000	699,380
1985-86	249,334	427,860	2,400	679,594
1986-87	244,686	478,744	2,300	725,730
1987-88	238,541	479,318	3,500	721,359
1988-89	244,530	466,166	5,300	715,996
1989-90	245,668	448,285	5,900	699,853
1990-91	240,700	485,109	5,000	730,809
1991-92	252,718	395,191	4,900	652,809
1992-93	190,736	388,949	824	580,509
1993-94	198,391	483,287	3,413	685,091
1994-95	221,998	437,191	6,143	665,332
1995-96	234,636	426,699	19,804	681,139
1996-97	240,137	436,569	25,046	701,752
1997-98	240,164	375,738	27,075	642,977
1998-99	256,344	396,655	30,510	683,509
1999-00	252,082	395,681	33,589	681,352
2000-01	249,231	395,024	32,589	676,844
2001-02	250,231	395,799	38,694	684,724
2002-03	242,214	381,148	38,839	662,201
2003-04	248,378	389,233	36,626	674,237
2004-05	230,004	402,660	33,988	666,652
2005-06	227,839	366,815	35,301	629,955
2006-07	235,770	376,492	41,899	654,161
2007-08	244,732	346,035	45,120	635,887
2008-09	243,402	320,711	43,153	607,266
2009-10	241,329	278,857	43,547	563,734
TOTAL	12,852,393	19,058,840	570,561	32,481,793

(a) Los Coyotes on-line in 1979; Long Beach on-line in 1980

* - Includes imported & recycled at seawater barriers, but not spreading grounds.

The Act requires that a 2020 Target and 2015 Interim Target be calculated using the above elements and one of four methods. These methods, as described in the 2010 UWMP Guidebook, as follows:

- **Method 1:** Eighty percent of the water supplier’s baseline per capita water use.

- **Method 2:** Per capita daily water use estimated using the sum of performance standards applied to indoor residential use, landscaped area water use, and CII uses.
- **Method 3:** Ninety-five percent of the applicable state hydrologic region target.
- **Method 4:** Calculated savings of metering currently unmetered water connections and achieving water conservation measures in three water use sectors.

While the above methods are used to calculate the 2020 Target and 2015 Interim Target for individual agencies, Method 9 is used to calculate the 2020 Target and 2015 Interim Target for a regional alliance. Method 9 does not utilize a distinct set of calculations; rather, the above methods are applied to the region using one of three options described in the 2010 UWMP Guidebook. These options are listed below:

- **Option 1:** A population-weighted average. A target is calculated for an individual urban water supplier, using any method described above, and for any baseline period (ending between December 31, 2004 and December 31, 2010). An agency's target is then multiplied by the ratio of that agency's population to the total population. Summing the resulting values from all participating agencies yields the Regional 2020 Target.
- **Option 2 and Option 3:** An aggregate of individual agency water use and population information. There are slight differences between Option 2 and Option 3, but they can be similarly described. The water use and population information is summed for all participating agencies, and the regional base daily per capita water use is calculated for each year. The 10-year or 15-year baseline is calculated for the region, and one of the four methods described above is applied to obtain the 2020 Target.

4 Results

Multiple Method-and-Option combinations were analyzed to calculate a 2020 Target that would best suit the Gateway Regional Alliance. While the Gateway Regional Alliance elected to calculate the 2020 Target using Option 1 with Method 1 and Method 3, the results of other approaches can be found in Appendix B. The following table details the agency-specific 5-year Baseline, 10-year Baseline, and 2020 Target as well as the Regional 10-Year Baseline, the Regional 2020 Target, and the Regional 2015 Interim Target.

Table 2. Regional Target Calculation

Methodology 9: Option 1 – Population Weighted Average								
City/Agency	2010 Population	2010 5yr Baseline GPCD	2010 10yr Baseline GPCD	Baseline Weighted Use GPCD	2020 Target GPCD	Method	2020 Target Weighted Use GPCD	2015 Interim Target
Bell Gardens	19,887	48	49	0.8	49	1	0.8	
BSMWC	46,000	99	106	3.9	94	3	3.5	
Cerritos	51,113	137	144	6.0	130	3	5.4	
Downey	110,452	114	113	10.1	108	3	9.6	
Huntington Park	64,219	62	65	3.4	65	1	3.4	
Lakewood	59,660	106	106	5.1	101	3	4.9	
Long Beach	462,257	112	120	44.9	106	3	39.7	
Lynwood	73,212	64	67	4.0	67	1	4.0	
Norwalk	18,361	115	118	1.7	110	3	1.6	
Paramount	57,805	98	101	4.7	93	3	4.4	
Pico Rivera*	62,942	102	102	5.2	97	3	4.9	
Santa Fe Springs	17,438	328	350	4.9	280	1	4.0	
Signal Hill	11,465	153	161	1.5	142	3	1.3	
South Gate	94,746	73	79	6.0	79	1	6.0	
Vernon	90	83005	81643	5.9	65314	1	4.8	
Whittier	87,128	69	71	5.0	71	1	5.0	
Regional Totals	1,236,775			113.2			103.1	108.2

*City of Pico Rivera and Pico Water District were combined

5 Regional Alliance Formation

5.1 Alliance Process

As noted previously, the following urban water suppliers have committed to forming the Gateway Regional Alliance.

Participating Agencies	
Bellflower-Somerset Mutual Water Company	City of Bell Gardens
City of Cerritos	City of Downey
City of Huntington Park	City of Lakewood
City of Long Beach	City of Lynwood
City of Norwalk	City of Paramount
City of Pico Rivera	Pico Water District
City of Santa Fe Springs	City of Signal Hill
City of South Gate	City of Vernon
City of Whittier	

A Letter Agreement will be signed by all participating agencies and submitted to DWR to inform them that the Gateway Regional Alliance has been formed.

Each individual agency will adopt a Board Resolution and has agreed to take it to their individual Board of Supervisors for approval. While there may be minor differences due to formatting and preferred language the substance of the Resolution is the same for all agencies.

As indicated in the 2010 UWMP Guidebook, there are consequences should any member of the Gateway Regional Alliance decide to leave, or should the Gateway Regional Alliance decide to dissolve. If an individual agency withdraws from the Gateway Regional Alliance, the withdrawing water supplier must then comply individually. The water suppliers remaining in the Gateway Regional Alliance must revise the regional baseline and target data and alliance membership in the subsequent UWMP. The memorandum of understanding or other legal agreements governing the alliance may define additional consequences or remedies.

If the Gateway Regional Alliance dissolves before 2020, each affected water supplier must then comply individually or form or join another alliance. An affected water supplier that had not

previously submitted an individual urban water management plan has to submit an urban water management plan or a regional water management plan. The memorandum of understanding or other legal agreements governing the alliance may define additional consequences or remedies.

The Gateway Regional Alliance will revisit the calculations in 2015 and address any changes to the composition of the alliance or differences in the data. If any agencies have withdrawn from the alliance, or if new agencies have expressed an interest in joining, the same process will be used to calculate a new Baseline and 2020 Target. In addition to accepting requests to join, the Gateway Regional Alliance will make more outreach attempts to the remaining agencies within the Gateway IRWMP area.

5.2 Integration with Urban Water Management Plans

The Gateway Regional Alliance acknowledges that DWR will collect the data pertaining to the alliance through the individual supplier UWMPs, the Central Basin Regional UWMP, and this report. The following information; most of which has been detailed in this report, will also be presented in the individual supplier's UWMPs:

- A list of all regional alliances of which an individual supplier is a member
- Baseline Gross Water Use and Service Area Population (2010, 2015, 2020)
- Individual 2020 Urban Water Use Target and Interim 2015 Urban Water Use Target
- Compliance Year Gross Water Use (2015 and 2020) and Service Area Population
- Adjustments to Gross Water Use in the compliance year (2015 and 2020)

Central Basin will include the data elements that are now required to be included in the individual UWMPs (above), as well as the same data elements aggregated over all regional alliance members in the regional UWMP.

6 Conclusion

The Gateway Regional Alliance has been formed by agencies in the Gateway IRWMP area for the purpose of complying with the requirements of SBX7-7. In accordance with the methodologies and approaches outlined in the 2010 UWMP Guidebook, the Gateway Regional Alliance has calculated the Regional Baseline Daily Per Capita Water Use, Regional 2020 Urban Water Use Target, and Regional 2015 Interim Urban Water Use Target. The following table displays these values.

Gateway Regional Alliance Summary Values

Regional 2010 Population	1,236,775
Regional 10-Yr Baseline GPCD (Ending December 31, 2010)	113.2
Regional 2015 Interim Target GPCD	108.2
Regional 2020 Target GPCD	103.1

7 References

California Department of Water Resources. March 2011. Guidebook to Assist Urban Water Suppliers to Prepare a 2010 Urban Water Management Plan.

Water Replenishment District of Southern California. March 4, 2011. Engineering Survey and Report.

Appendix A

Los Angeles Gateway Region

Integrated Regional Water Management
Joint Powers Authority

11111 Brookshire Avenue, Downey, California 90241
(562) 904-2180 (ph) (562) 923-6388 (fax)

Christopher Cash
Board Chair
Paramount

Adriana Figueroa
Vice-Chair
Norwalk

Desi Alvarez
Secretary-Treasurer
Downey

Kevin Wattier
Chair Emeritus
Long Beach Water Department

John Oropeza
Bell Gardens

Deborah Chankin
Bellflower

Art Aguilar
Central Basin
Municipal Water District

Vince Brar
Cerritos

Gina Nila
Commerce

Jim Glancy
Lakewood

Mark Christoffels
Long Beach

G. Daniel Ojeda
Lynwood

Al Cablay
Pico Rivera

Don Jensen
Santa Fe Springs

Charlie Honeycutt
Signal Hill

William DeWitt
South Gate

Joseph Serrano
Southeast Water Coalition

Kevin Wilson
Vernon

David Pelser
Whittier

Annette Hubbell
Executive Officer

Steve Dorsey
General Counsel
Richards Watson Gershon

March 11, 2011

Re: Offer of Assistance in Supplying State-Mandated Water Usage Data for your
Urban Water Management Plan

Dear :

The Gateway Authority (Los Angeles Gateway Region Integrated Regional Water Management Joint Powers Authority) is embarking on a regional compliance approach to fulfill the requirements of the Water Conservation Act of 2009 (SBx7-7).

The provisions of the Water Conservation Act, signed by the Governor on November 10, 2009, require that you develop per capita urban water use targets for 2020 and interim dates in order to qualify for state grants and loans. This can be a time-consuming, labor-intensive task. One of the options provided by the statutes, however, include developing these water conservation goals on a regional basis. The Gateway Authority, as a regional entity, is in the process of coordinating and compiling the 20x2020 targets for its members and other stakeholders. The Gateway Authority will need to provide that submittal to the Department of Water Resources (DWR) by June 30, 2011.

Because compliance can be assessed regionally, if the region does meet that regional target, all suppliers in the alliance will be deemed compliant. Additional benefits of regional compliance include a reduction in reporting costs, continuing regional coordination and cooperation, and a contribution to more efficient water use.

The Gateway Authority would like to extend an invitation to you to participate in the Gateway Authority's regional effort.

If you are interested in participating in this process, or have questions, please contact me at ashubbell@cox.net, or 858-395-5083. For your convenience, I have attached a fact sheet with information about who we are. Our consultant, Bookman-Edmonston/GEI Consultants, has already begun collecting information for the process; therefore, your rapid response to this invitation is requested. Please provide indication of your interest no later than March 31, 2011.

Sincerely,



Annette Hubbell
Executive Officer
Gateway Authority

enc: Gateway Authority Fact Sheet

Appendix B

Regional Target Calculation
Methodology 9 - Option 1: Population Weighted Average
Targets Calculated Using only Method 1

City/Agency	2010 Population	2010 Baseline GPCD	Baseline Weighted Use (Gal)	2020 Target GPCD	2020 Target Weighted Use* (Gal)	2015 Interim Target
Bell Gardens	19,887	49	0.8	49	0.8	
BSMWC	46,000	106	3.9	85	3.1	
Cerritos	51,113	144	6.0	115	4.8	
Downey	110,452	113	10.1	91	8.1	
Huntington Park	64,219	65	3.4	65	3.4	
Lakewood	59,660	106	5.1	85	4.1	
Long Beach	462,257	120	44.9	96	35.9	
Lynwood	73,212	67	4.0	67	4.0	
Norwalk	18,361	118	1.7	94	1.4	
Paramount	57,805	101	4.7	81	3.8	
Pico Rivera	62,942	102	5.2	82	4.2	
Santa Fe Springs	17,438	350	4.9	280	4.0	
Signal Hill	11,465	161	1.5	129	1.2	
South Gate	94,746	79	6.0	79	6.0	
Vernon	90	81643	5.9	65314	4.8	
Whittier	87,128	71	5.0	71	5.0	
Total	1,236,775		113.2		94.4	103.8

Target was calculated for all agencies using Method 1: 80% Reduction

Regional Target Calculation
Methodology 9 - Option 2: Aggregate Population and Water Use
Target Calculated Using Method 1

(1)	(2)	(3)	(4)
Base Year	Service Area Population	Gross Water Use (Gal/Day)	Daily Per Capita Water Use (3)/(2)
1996			
1997			
1998			
1999			
2000			
2001	1,200,915	139,356,293	116
2002	1,206,434	142,270,711	118
2003	1,210,898	138,616,335	114
2004	1,215,776	142,060,619	117
2005	1,245,155	139,721,130	112
2006	1,235,223	141,667,824	115
2007	1,244,926	143,739,334	115
2008	1,244,112	135,777,434	109
2009	1,240,450	125,567,444	101
2010	1,236,775	118,068,398	95
Total of Column (4)			1113
Baseline Daily Per Capita Water Use			111

(1)	(2)	(3)	(4)
Base Year	Service Area Population	Gross Water Use (Gal/Day)	Daily Per Capita Water Use (3)/(2)
2006	1,235,223	141,667,824	115
2007	1,244,926	143,739,334	115
2008	1,244,112	135,777,434	109
2009	1,240,450	125,567,444	101
2010	1,236,775	118,068,398	95
Total of Column (4)			536
5-Year Base Daily Per Capita Water Use			107
Gateway Regional Alliance, 2020 Urban Water Use Target GPCD (Method 1)			89
Gateway Regional Alliance, 2015 Interim Urban Water Use Target GPCD (Average of Baseline and 2020 Target)			100

Regional Target Calculation
Methodology 9 - Option 2: Aggregate Population and Water Use
Target Calculated Using Method 3

(1)	(2)	(3)	(4)
Base Year	Service Area Population	Gross Water Use (Gal/Day)	Daily Per Capita Water Use (3)/(2)
1996			
1997			
1998			
1999			
2000			
2001	1,200,915	139,356,293	116
2002	1,206,434	142,270,711	118
2003	1,210,898	138,616,335	114
2004	1,215,776	142,060,619	117
2005	1,245,155	139,721,130	112
2006	1,235,223	141,667,824	115
2007	1,244,926	143,739,334	115
2008	1,244,112	135,777,434	109
2009	1,240,450	125,567,444	101
2010	1,236,775	118,068,398	95
Total of Column (4)			1113
Baseline Daily Per Capita Water Use			111

(1)	(2)	(3)	(4)
Base Year	Service Area Population	Gross Water Use (Gal/Day)	Daily Per Capita Water Use (3)/(2)
2006	1,235,223	141,667,824	115
2007	1,244,926	143,739,334	115
2008	1,244,112	135,777,434	109
2009	1,240,450	125,567,444	101
2010	1,236,775	118,068,398	95
Total of Column (4)			536
5-Year Base Daily Per Capita Water Use			107
Gateway Regional Alliance, 2020 Urban Water Use Target GPCD (Method 3)			102
Gateway Regional Alliance, 2015 Interim Urban Water Use Target GPCD (Average of Baseline and 2020 Target)			107

Appendix C

Letter Agreement

Between and Among the Cities of Cerritos, Downey, Huntington Park, Lakewood, Long Beach, Lynwood, Norwalk, Paramount, Pico Rivera, Santa Fe Springs, Signal Hill, South Gate, Vernon, Whittier, and Pico Water District

For

Establishing a Regional Alliance to Comply with SB X7-7, the Water Conservation Act of 2009

Recitals

1. The Water Conservation Act of 2009 (SB X7-7) set a goal of achieving a 20% reduction in statewide urban per capita water use by the year 2020 and requires urban water retailers to set a 2020 urban per capita water use target. SB X7-7 provides that urban water retailers may plan, comply and report on a regional basis, individual basis, or both.
2. The Parties to this Letter Agreement (Cities of Cerritos, Downey, Huntington Park, Lakewood, Long Beach, Lynwood, Norwalk, Paramount, Pico Rivera, Santa Fe Springs, Signal Hill, South Gate, Vernon, Whittier, and Pico Water District) are eligible to form a "regional Alliance" pursuant to the California *Department of Water Resources Methodologies for Calculating Baseline and Compliance Urban Per Capita Water Use* (DWR Methodologies) because the Parties are recipients of water from a common wholesale water supplier, Central Basin Municipal Water District, and are also a part of an Integrated Regional Water Management (IRWM) planning area, the Gateway Region IRWM. The Parties wish to establish a Regional Alliance for purposes of complying with SB X7-7.

Agreement for the Regional Alliance Formation, Target Calculation, and Reporting

Section 1. Regional Alliance Formation and Target Calculation

The Parties hereby form a Regional Alliance and agree to inform DWR, prior to July 1, 2011, that a Regional Alliance has been formed, pursuant to the DWR Methodologies. The Parties agree that the Regional Alliance Target will be calculated using Option X (as described in DWR Methodology 9). Each Party will include the Regional Alliance Target in its individual 2010 Urban Water Management Plan.

Section 2. Regional Alliance Review

The Parties intend to review and re-calculate the Regional Alliance and Regional Alliance Target, no later than December 31, 2015, in preparation of their respective 2015 Urban Water Management Plans.

Section 3. Regional Alliance Reporting

The Parties intend to prepare and submit Regional Alliance Reports pursuant to the DWR Methodologies, including, but not limited to, the following information:

- Baseline Gross Water Use and Service Area Population,
- 2015 and 2020 Water Use Targets (Individual and Regional),
- Compliance Year Gross Water Use and Service Area Population, and
- Adjustments to Gross Water Use in Compliance Year

Section 4. Regional Water Supply Planning

The Parties intend to participate in discussions regarding regional water supply planning.

Section 5. Regional Alliance Dissolution

The Parties agree that each Party can withdraw from the Regional Alliance at any time without penalty by giving written notice to all other Parties. If a Party withdraws from the Regional Alliance, the Parties agree that the Regional Target will be recalculated among remaining participating Parties as set forth in the DWR Methodologies.

Section 6. Miscellaneous

This Letter Agreement shall be between and among those Parties that have executed this Letter Agreement by (Month/Day), 2011. If all Parties have not executed this Letter Agreement by said date, the Parties who have executed this Letter Agreement by (Month/Day), 2011, agree that the Regional Target will be recalculated among participating Parties as set forth in the DWR Methodologies.

Section 7. Letter Agreement Authorization

This Letter Agreement may be signed in counterparts. By signing below, each signatory states that he or she is authorized to sign this Letter Agreement on behalf of the Party for which he or she is signing.

Signature Date

Print Name City of Cerritos

LEFT BLANK INTENTIONALLY

Signature Date

Print Name City of Downey

Signature Date

Print Name City of Huntington Park

Signature Date

Print Name City of Lakewood

Signature Date

Print Name City of Lynwood

Linda Benedetti-Leal 5/4/11

Signature Date

LINDA BEBEDIETTI-LEAL

Print Name City of Paramount

Signature Date

Print Name City of Santa Fe Springs

Signature Date

Print Name City of South Gate

Signature Date

Print Name City of Whittier

Signature Date

Print Name City of Long Beach

Signature Date

Print Name City of Norwalk

Signature Date

Print Name City of Pico Rivera

Signature Date

Print Name City of Signal Hill

Signature Date

Print Name City of Vernon

Signature Date

Print Name Pico Water District

RESOLUTION NO. 2011-24

A RESOLUTION OF THE CITY COUNCIL OF THE CITY OF LAKEWOOD AUTHORIZING AND APPROVING A LETTER OF AGREEMENT BETWEEN AND AMONG THE CITIES OF DOWNEY, HUNTINGTON PARK, LAKEWOOD, LONG BEACH, LYNWOOD, NORWALK, PARAMOUNT, PICO RIVERA, SANTA FE SPRINGS, SIGNAL HILL, SOUTH GATE, VERNON, WHITTIER, AND PICO WATER DISTRICT FOR ESTABLISHING A REGIONAL ALLIANCE TO COMPLY WITH SB X7-7, THE WATER CONSERVATION ACT OF 2009

WHEREAS, Senate Bill X7-7, the Water Conservation Act was signed into law in 2009;
and

WHEREAS, the Water Conservation Act of 2009 sets a goal for urban water suppliers to reduce per capita water use by 20 percent by the year 2020; and

WHEREAS, the City desires to participate in a regional alliance for the purposes of compliance with the Water Conservation Act of 2009; and

WHEREAS, the City further supports the regional water planning program sponsored by the Los Angeles Gateway Region Integrated Water Management Joint Powers Authority.

NOW, THEREFORE, BE IT RESOLVED by the City Council of the City of Lakewood that it does hereby authorize and approve a letter agreement between and among the cities of Downey, Huntington Park, Lakewood, Long Beach, Lynwood, Norwalk, Paramount, Pico Rivera, Santa Fe Springs, Signal Hill, South Gate, Vernon, Whittier, and Pico Water District for establishing a regional alliance to comply with SB X7-7, the Water Conservation Act of 2009.

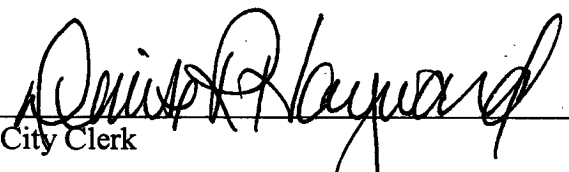
BE IT FURTHER RESOLVED that the City Manager is hereby authorized and directed to take all actions to effectuate this agreement for and on behalf of the City of Lakewood, including execution, if necessary, in substantially similar form to the agreement attached hereto as Exhibit "A," subject to minor modifications by the City Manager or City Attorney.

ADOPTED AND APPROVED THIS 24TH DAY OF MAY, 2011.



Mayor

ATTEST:



City Clerk

