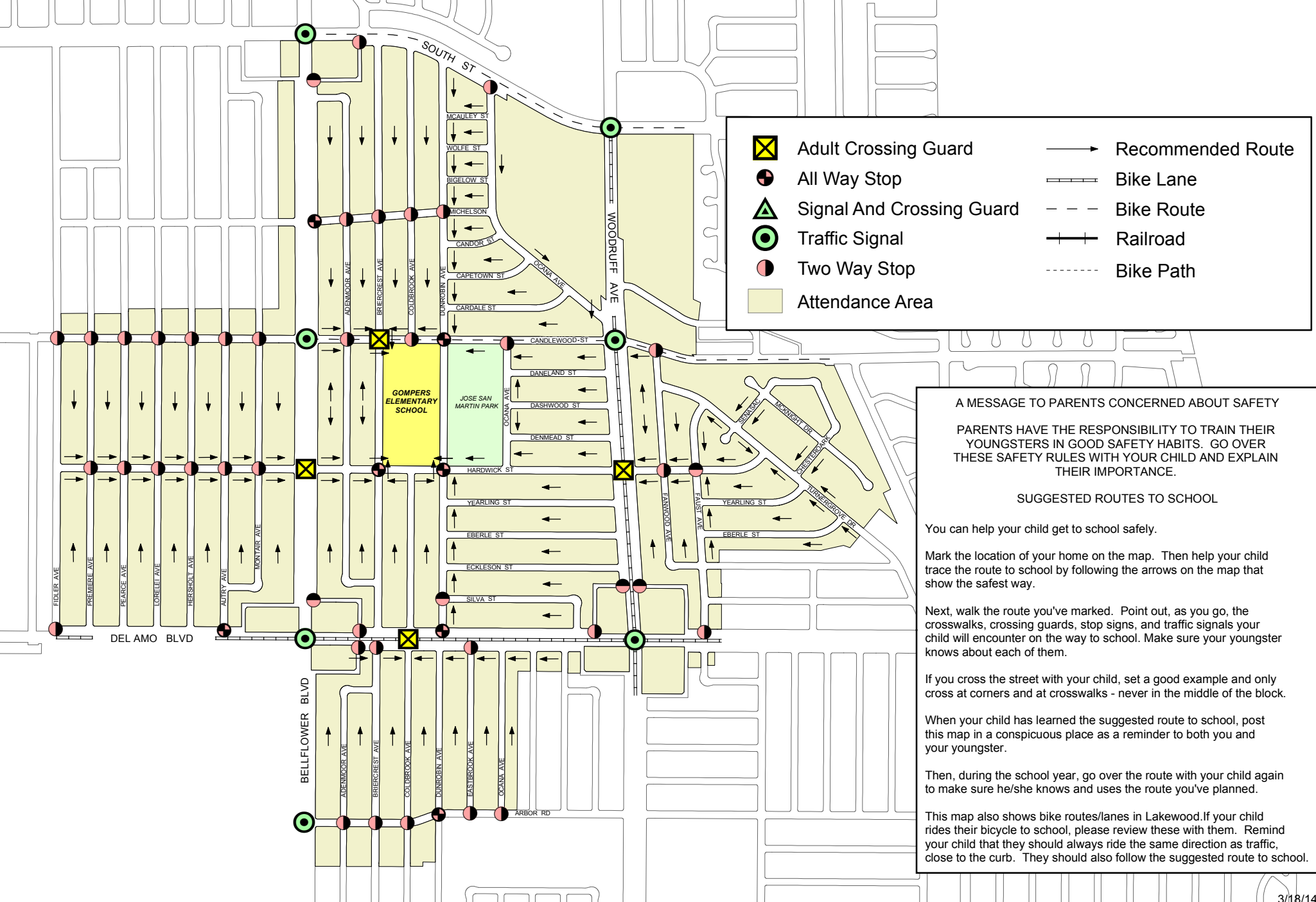




# Suggested Routes To Gompers Elementary School



	Adult Crossing Guard		Recommended Route
	All Way Stop		Bike Lane
	Signal And Crossing Guard		Bike Route
	Traffic Signal		Railroad
	Two Way Stop		Bike Path
	Attendance Area		

**A MESSAGE TO PARENTS CONCERNED ABOUT SAFETY**

PARENTS HAVE THE RESPONSIBILITY TO TRAIN THEIR YOUNGSTERS IN GOOD SAFETY HABITS. GO OVER THESE SAFETY RULES WITH YOUR CHILD AND EXPLAIN THEIR IMPORTANCE.

**SUGGESTED ROUTES TO SCHOOL**

You can help your child get to school safely.

Mark the location of your home on the map. Then help your child trace the route to school by following the arrows on the map that show the safest way.

Next, walk the route you've marked. Point out, as you go, the crosswalks, crossing guards, stop signs, and traffic signals your child will encounter on the way to school. Make sure your youngster knows about each of them.

If you cross the street with your child, set a good example and only cross at corners and at crosswalks - never in the middle of the block.

When your child has learned the suggested route to school, post this map in a conspicuous place as a reminder to both you and your youngster.

Then, during the school year, go over the route with your child again to make sure he/she knows and uses the route you've planned.

This map also shows bike routes/lanes in Lakewood. If your child rides their bicycle to school, please review these with them. Remind your child that they should always ride the same direction as traffic, close to the curb. They should also follow the suggested route to school.