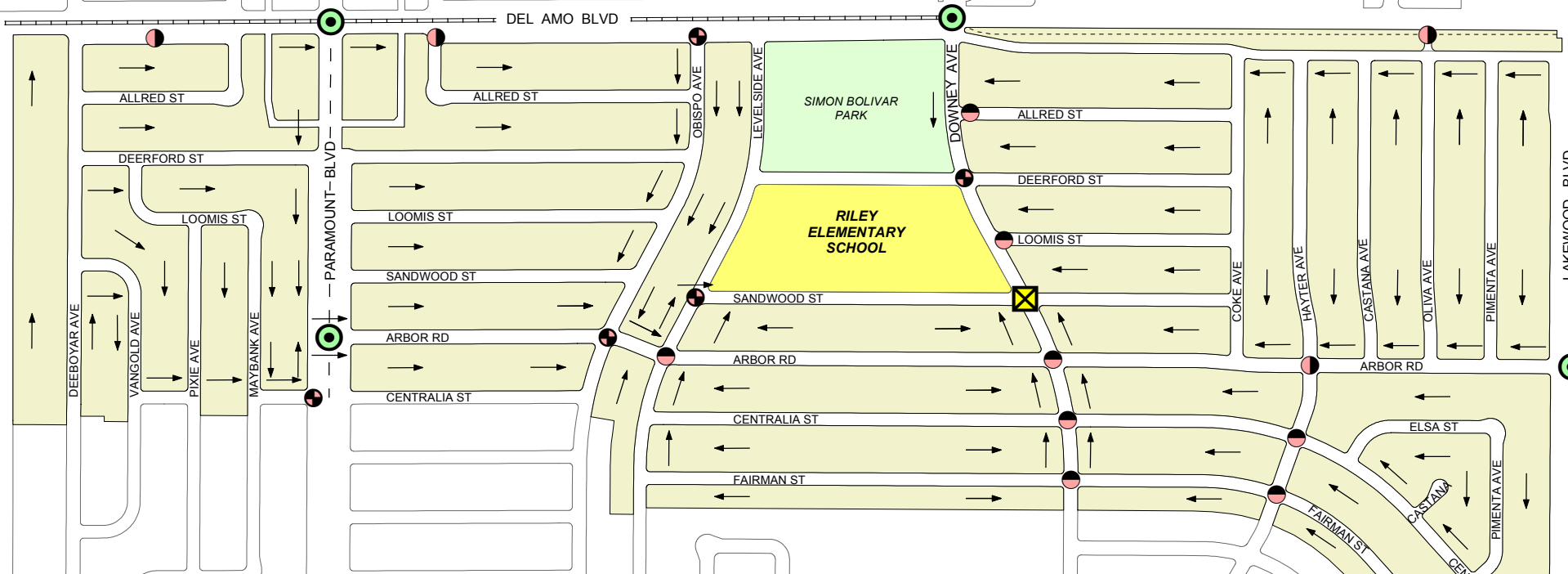




Suggested Routes To Riley Elementary School



A MESSAGE TO PARENTS CONCERNED ABOUT SAFETY

PARENTS HAVE THE RESPONSIBILITY TO TRAIN THEIR YOUNGSTERS IN GOOD SAFETY HABITS. GO OVER THESE SAFETY RULES WITH YOUR CHILD AND EXPLAIN THEIR IMPORTANCE.

SUGGESTED ROUTES TO SCHOOL

You can help your child get to school safely.

Mark the location of your home on the map. Then help your child trace the route to school by following the arrows on the map that show the safest way.

Next, walk the route you've marked. Point out, as you go, the crosswalks, crossing guards, stop signs, and traffic signals your child will encounter on the way to school. Make sure your youngster knows about each of them.

If you cross the street with your child, set a good example and only cross at corners and at crosswalks - never in the middle of the block.

When your child has learned the suggested route to school, post this map in a conspicuous place as a reminder to both you and your youngster.

Then, during the school year, go over the route with your child again to make sure he/she knows and uses the route you've planned.

This map also shows bike routes/lanes in Lakewood. If your child rides their bicycle to school, please review these with them. Remind your child that they should always ride the same direction as traffic, close to the curb. They should also follow the suggested route to school.

- Adult Crossing Guard
- All Way Stop
- Signal And Crossing Guard
- Traffic Signal
- Two Way Stop
- Recommended Route
- Bike Lane
- Bike Route
- Railroad
- Bike Path
- Attendance Area